



TRUPOINT INSTALLATION GUIDE
VERSION 1.0

Confidential

Lifepoint TruPrint Installation Guide, vers. 1.0

Copyright Notice

Lifepoint Informatics, Glen Rock, New Jersey 07452

Copyright © 1999 - 2014 Lifepoint Informatics. All rights reserved.

This document is protected by the copyright laws as an unpublished work.

Confidentiality and Proprietary Rights

This document is the confidential property of Lifepoint Informatics. It is furnished under an agreement with Lifepoint Informatics and may only be used in accordance with the terms of that agreement. The use of this document is restricted to customers of Lifepoint Informatics and their employees. The user of this document agrees to protect Lifepoint Informatics' proprietary rights as expressed herein. The user further agrees not to permit access to this document by any person for any purpose other than as an aid in the use of the associated system. In no case will this document be examined for the purpose of copying any portion of the system described herein or to design another system to accomplish similar results. This document or portions of it may not be copied without written permission from Lifepoint Informatics.

Revision History

February 18, 2014

Version 1.0

Original Document

YM/CLC

Lifepoint TruPrint Installation Guide, vers. 1.0

Overview:

This document is to be referenced for a guide to the installation of TruPrint.

Purpose:

The purpose of this document is to provide Lifepoint clients with a guide for installing TruPrint.

Table of Contents

Copyright Notice 2

Confidentiality and Proprietary Rights 2

Revision History..... 2

Overview:..... 3

Purpose: 3

A. Requirements for Installation 5

B. Steps to Setup a User 5

C. Install TruPrint on User's PC 6

D. Running TruPrint..... 8

A. Requirements for Installation

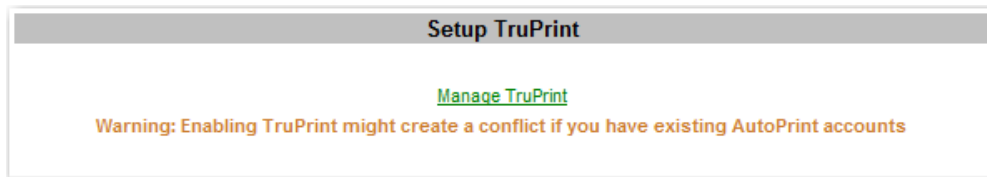
1. Windows 7 and up.
2. Internet Browser: IE 8+ , Chrome or Firefox.
3. Latest JAVA should be installed. Please verify at:
<http://www.java.com/en/download/installed.jsp>.
If it is not installed, or if it is an old version, please download:
<http://www.java.com/en/download/>

B. Steps to Setup a User

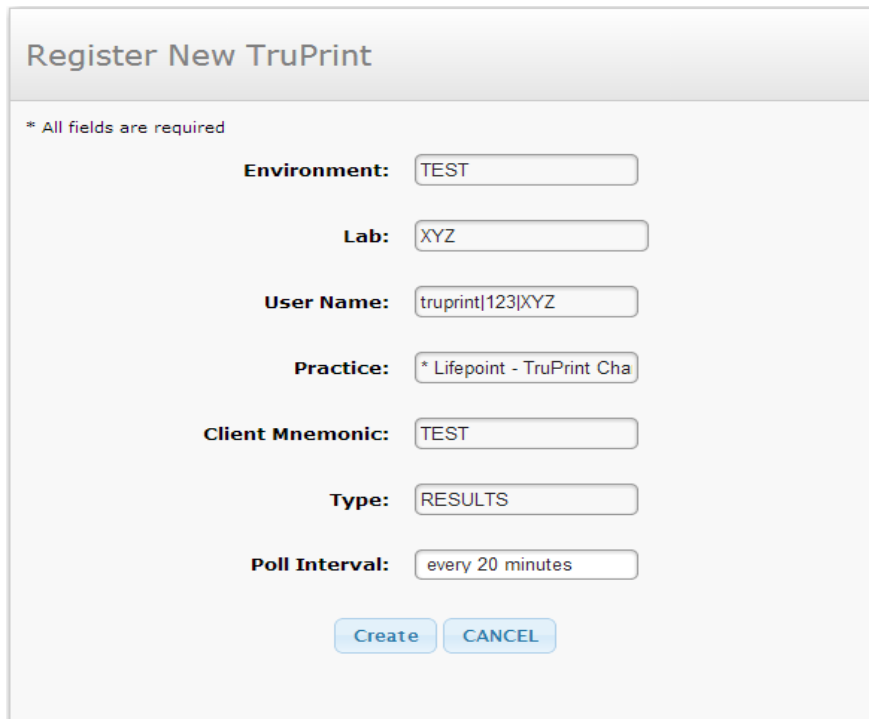
1. In Admin Mode select to edit the User that you are setting up for TruPrint.



2. Select the 'Setup TruPrint' option. A new page will display.

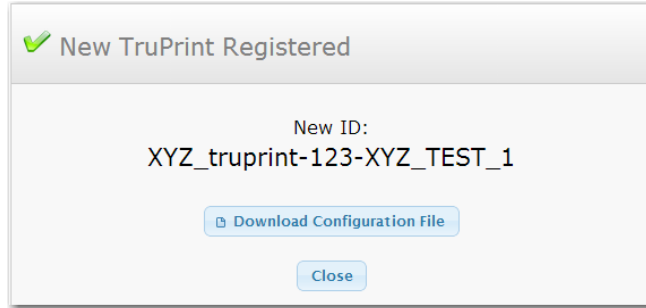


3. Select the 'Manage TruPrint' link. A window will open.

A screenshot of a 'Register New TruPrint' form. The form has a title 'Register New TruPrint' and a note '* All fields are required'. It contains several input fields: 'Environment' (TEST), 'Lab' (XYZ), 'User Name' (truprint|123|XYZ), 'Practice' (* Lifepoint - TruPrint Cha), 'Client Mnemonic' (TEST), 'Type' (RESULTS), and 'Poll Interval' (every 20 minutes). At the bottom are 'Create' and 'CANCEL' buttons.

- a. Select the 'Poll Interval' from the list displayed (20 minutes is the default). Click on the 'Create' button to register the user for TruPrint. A new page will display.

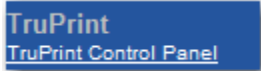
Lifepoint TruPrint Installation Guide, vers. 1.0



- b. Click on the 'Download Configuration File' button and save the file on your PC. You will need this file later for installation purposes.

C. Install TruPrint on User's PC

- 1. Select the 'TruPrint Control Panel Link in the Admin Mode Navigation Bar.



- 2. The list of all registered TruPrint Users will display.

A screenshot of a table listing registered TruPrint users. The table has columns: Lab, Practice, Type, Last Print, Status, Printer Status, and Print time. The first row shows a successful registration with a green checkmark. The following four rows show failed registrations with red 'X' marks. The last row, for the user 'truprint|123|XYZ', has the 'RESULTS' link highlighted with a red box.

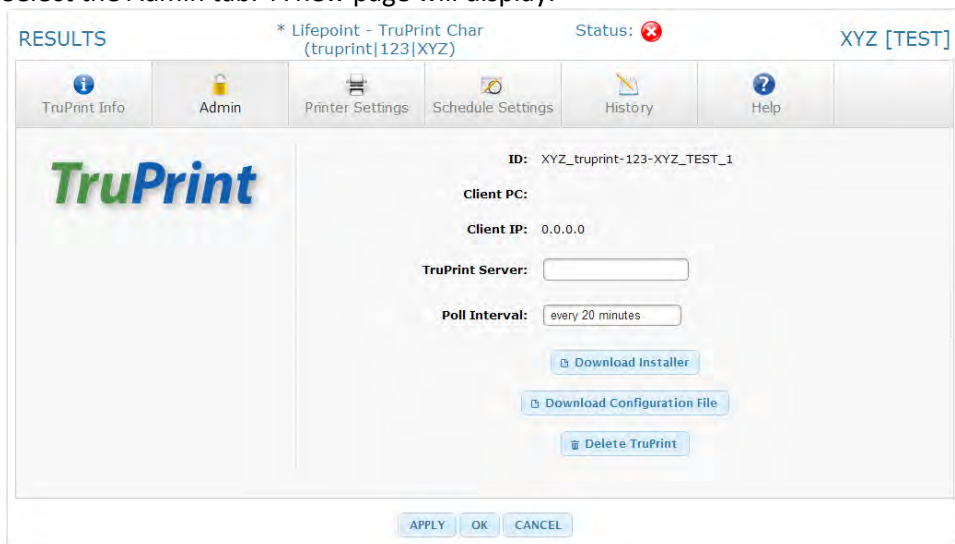
Lab	Practice	Type	Last Print	Status	Printer Status	Print time
XYZ	* LPMC UFUCIACVXYZ [TEST]	RESULTS		✓	N/A	Print time
XYZ	* Lifepoint - Char char 123 XYZ [TEST]	RESULTS		✗	N/A	
XYZ	* Lifepoint - Char14 char 11123 XYZ [TEST]	RESULTS		✗	N/A	
XYZ	* Lifepoint - Char 1CD-10 cd 101123 XYZ [TEST]	RESULTS		✗	N/A	
XYZ	* Char 9 - Sub 3 sub 123 XYZ [TEST]	RESULTS		✗	N/A	
XYZ	* Lifepoint - TruPrint Char truprint 123 XYZ [TEST]	RESULTS		✗	N/A	

- 3. Click on the 'Type' column link for the user that you just registered. A new page will display.

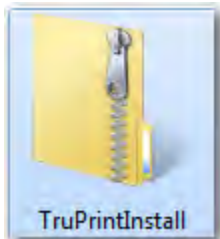


Lifepoint TruPrint Installation Guide, vers. 1.0

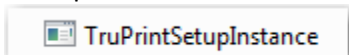
4. Select the Admin tab. A new page will display.



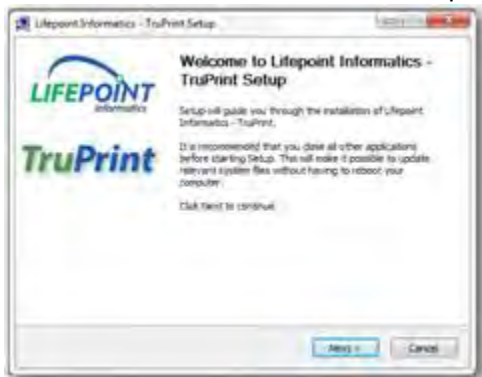
5. Select the Poll Interval from the dropdown box provided.
6. If you did not get a copy of the Configuration File in the previous step, you can obtain it here by clicking on the 'Download Configuration File' button.
7. Click on the 'Download Installer' button to save the zip file 'TruPrintInstall.zip'.



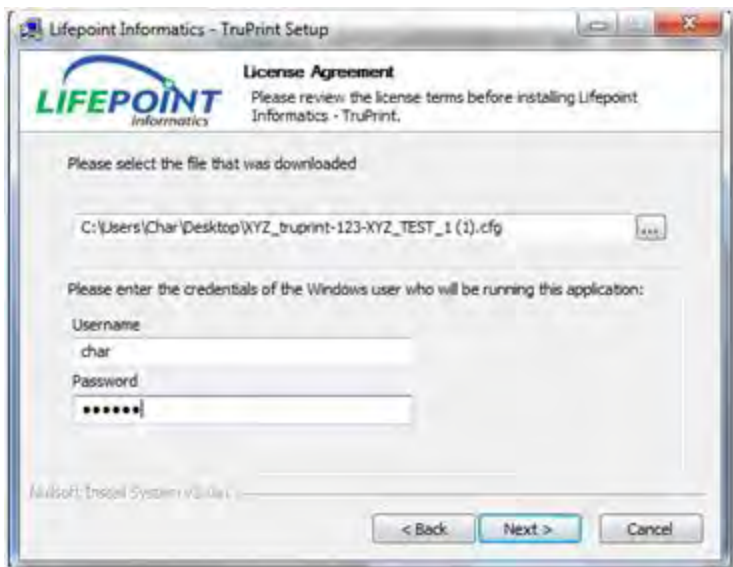
8. This zip file contains TruPrintSetupInstance.exe. Select to 'Run' this executable.



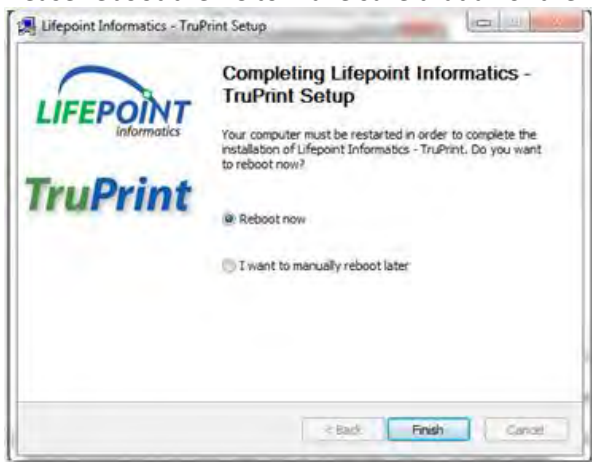
9. Follow the Installation Wizard to Setup TruPrint on the PC.



10. After you accept the User Agreement, the following screen will display:



- a. Select the configuration file that you previously downloaded. It should have a name similar to 'XYZ_XXX-XXX-XXX_Test_1.cfg'.
 - b. Enter the username and password that you use to login to this PC. TruPrint needs to know the list of printers that the PC user can access.
11. Continue to follow the Installation Wizard until the last screen, where it asks you to reboot. Please reboot the PC to make sure that all of the information entered has been saved.



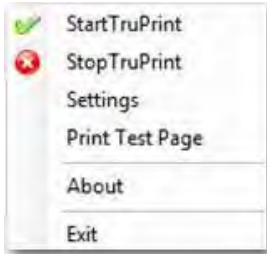
D. Running TruPrint

1. After rebooting the PC, TruPrint will be running automatically. The TruPrint icon should now display on your desktop.

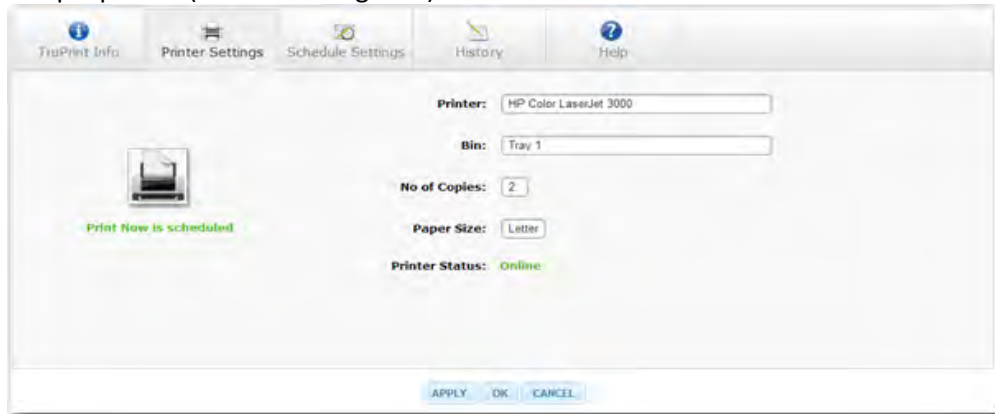


2. When you double click on the icon, it will place a small icon into the system tray where it will be available for user interactions.

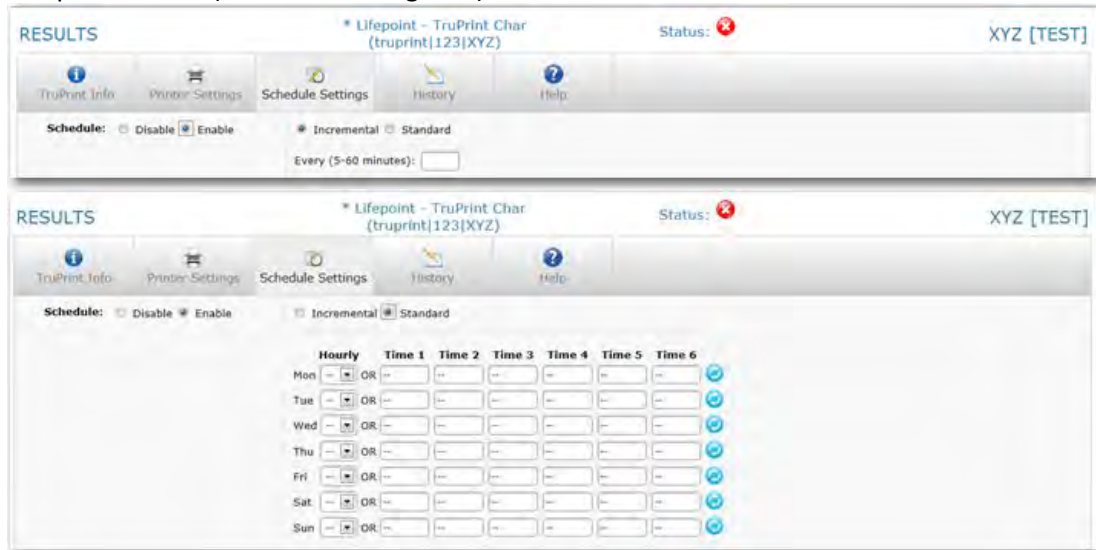
Lifepoint TruPrint Installation Guide, vers. 1.0



3. Selecting the 'Settings' option will open an internet browser window that will allow you to:
 - a. Setup a printer (Printer Settings tab)



- b. Setup a schedule (Schedule Settings tab).



4. A User Manual is available on the Help tab of the Settings page. It contains a detailed explanation of all available TruPrint features.

